

SURFACE MOUNT STYLE

PACIFIC RESISTOR CO.

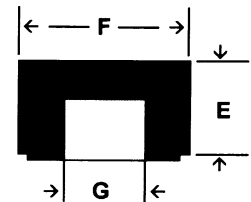
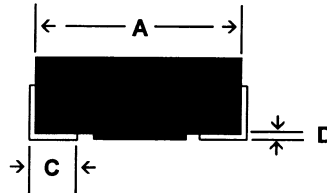
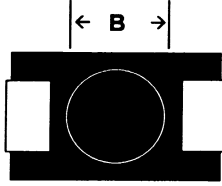
PHONE (818) 345 - 7811

(800) 835 - 3355

FAX (818) 345 - 1507

Surface Mount Wirewounds - .5 to 4 Watts

POWER, PRECISION POWER, LOW TC, TEMPERATURE SENSING, LOW OHM CURRENT SENSING



SURFACE MOUNT Specifications (Per ANSI/IPC-SM-72)

| TYPE | WATTS | A Max. | B W x H | C ± .010" | D ± .003" | E Max. | F Max. | G ± .020" |
|---------|-------|-----------|------------|--------------|--------------|-----------|-----------|--------------|
| PSM-1/2 | 0.5 | .210 | .10 x .005 | .040 | .006 | .110 | .130 | .060 |
| PSM-1 | 1 | .275 | .12 x .005 | .070 | .006 | .130 | .150 | .070 |
| PSM-2 | 2 | .475 | .19 x .005 | .100 | .006 | .180 | .250 | .120 |
| PSM-4 | 4 | .820 | .24 x .005 | .190 | .006 | .280 | .295 | .150 |

Electrical

- Non Inductive Styles Available
- Tolerances: 5%, 3%, 1%, .5%, .25%, .1%, .05%, .02%, .01%, .005%
- Standard Temperature Coefficient:
 - 90 PPM/C° > .1 < 1 ohms
 - 50 PPM/C° > 1 < 10 ohms
 - 20 PPM/C° > 10 ohms
- Insulation Resistance : not < 1000 Meg
- Special TC's Available 2 to 6000 PPM
- Matched Sets Available

Mechanical

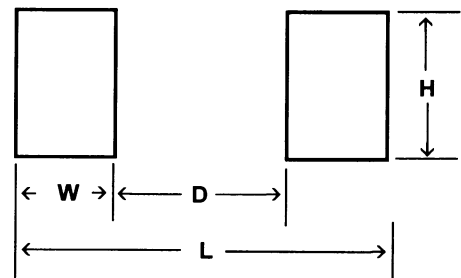
- Molded Construction
- All Welded Construction
- Tape & Reel Available: Per EIA 481-3
- Marking - Alphanumeric
- Matched Sets Available

Environmental Performance

- Mil-STD-202

FOOTPRINT Specifications

| TYPE | W | H | D | L |
|---------|-------|-------|-------|-------|
| PSM-1/2 | 0.062 | 0.1 | 0.125 | 0.25 |
| PSM-1 | 0.096 | 0.112 | 0.145 | 0.337 |
| PSM-2 | 0.155 | 0.23 | 0.23 | 0.54 |
| PSM-4 | 0.22 | 0.25 | 0.46 | 0.9 |



Pacific Resistor Co.

18300 OXNARD ST.
TARZANA, CA 91356